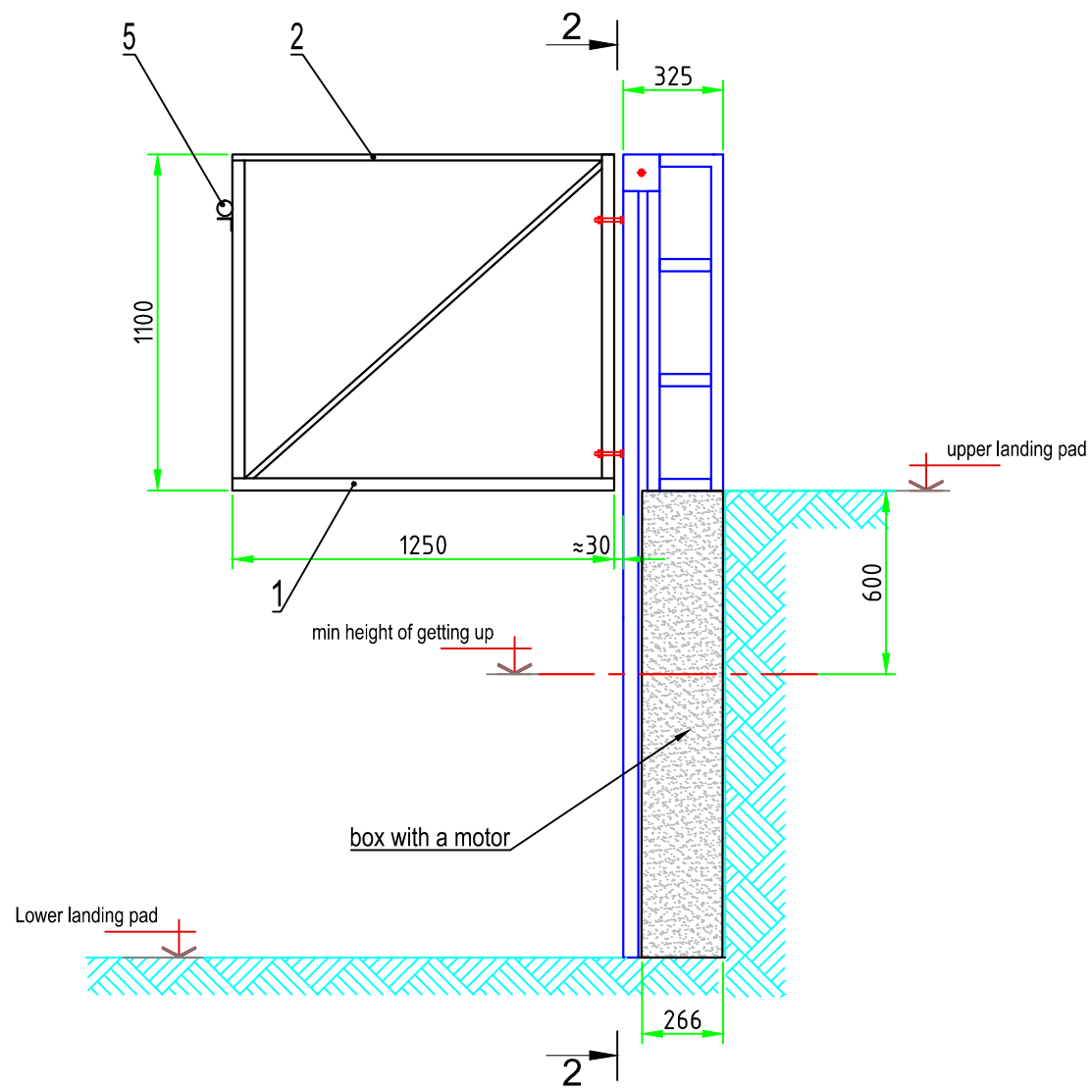
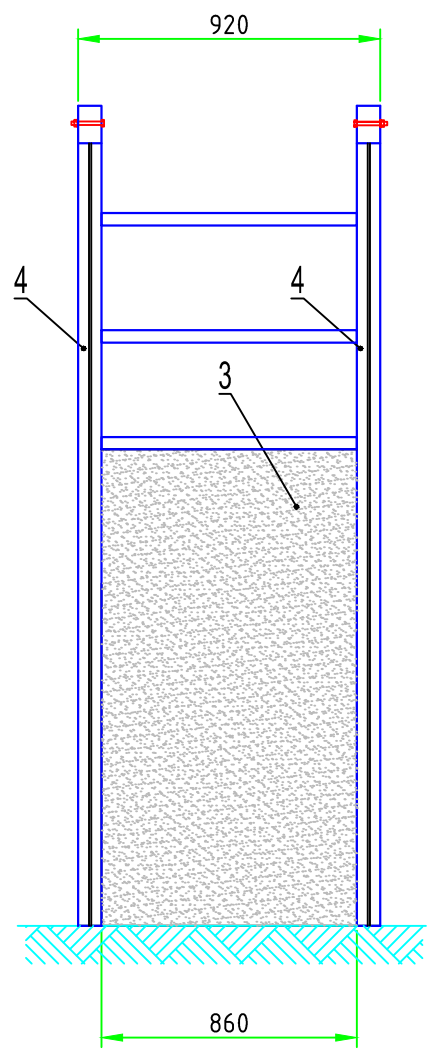


1 - 1



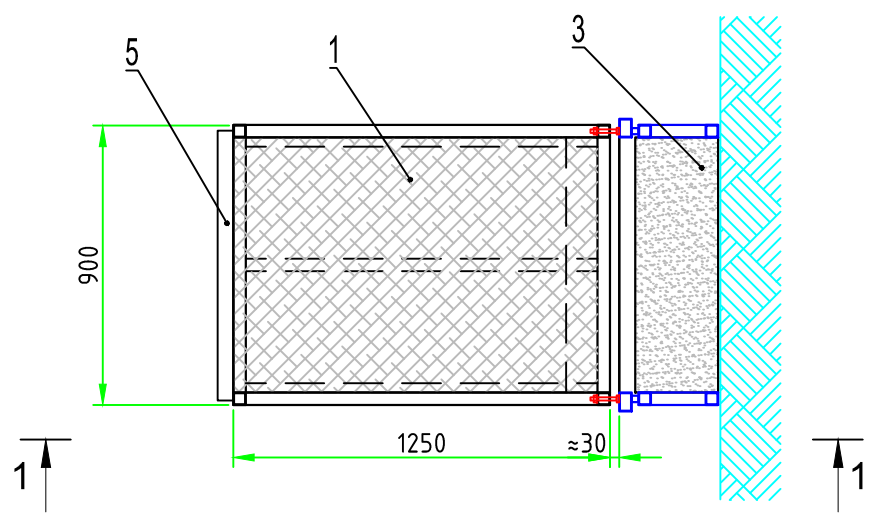
2 - 2



Note

1. All construction work at the site of the installation of the lifting platform should be completed before installation. The intrusion of construction dust and dirt on the working surfaces of the platform is not allowed.
2. Supply of power and earthing is carried out in accordance with the Electrical Engineering Regulations and other existing regulations.
3. Electric power supply of the platforms from single-phase 220 V 50 Hz network. The customer provides supply of the copper power cable (cross-section 3x1,5 mm) from the circuit breaker 10 A, class C, which is installed in the electric distribution panel, to the location of the station. There should not be any safety devices in the earthing chain.
4. Deviations of panels from the plane in the places of the arrival to the platform should not exceed 3%.
5. Color of the platform, protective walls, handrails and gates should be coordinated with the customer.
6. Platform may be adjacent to the wall frontally or sideways, so the exit from the platform can be arranged frontally or sideways.
7. Right or left opening of the gate is possible.
8. The size of the platform may be sized on request - for the area of up to 2m.

Lifting platform



Mark, position	Designation	Denomination	Amount	Remark
1		Platform	1	
2		Handrail	2	
3		Box with a motor	1	
4		Metallic pillar	2	
5		Barrier	1	

Developed	D.Smit			Lifting platform ECOPM		
Checked	V.Poida					
					1	
				Plan. Sections.		Rol-automatic SET